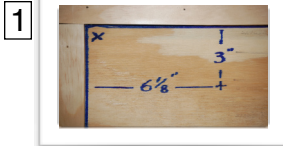


BREEZER INSTALLATION INSTRUCTIONS



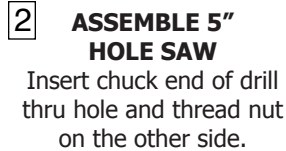
Tools Required:

Included: 5" Hole saw, 4 short screws, 3 long screws
Not Included: Drill, screwdriver, measuring device



MARK SPOT FOR 5" HOLE

Decide where the BREEZER will be mounted. Typically it should be mounted higher so the air outlet blows on the animal. The 5" hole should be drilled 6 1/8" over and 3" down from the upper left corner of the housing unit.



ASSEMBLE 5" HOLE SAW

Insert chuck end of drill thru hole and thread nut on the other side.



ATTACH FLEXIBLE DUCT TO BREEZER UNIT WITH HOSE CLAMP

FOR THIN WALLED HOUSES 1.5" OR LESS

You may not need to use the flexible tubing, however, to create a tight seal between the unit and the vent, please use 1 or 2 of the 3/4 black foam.

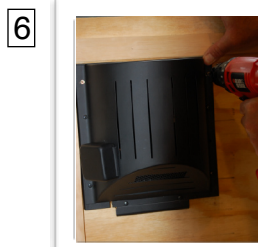


DRILL 5" HOLE



FEED CORD AND FLEXIBLE DUCT THRU 5" HOLE TO OUTSIDE

For thin walled houses, slide 1 or 2 pieces of foam between the vent and the BREEZER. This will form and seal the two for air transmission



ATTACH BREEZER UNIT TO INSIDE WALL WITH THE LONGER SCREWS



ATTACH OUTSIDE COVER TO FLEXIBLE DUCT WITH HOSE CLAMP



MOUNT OUTSIDE COVER TO OUTSIDE WALL WITH SHORTER SCREWS

If there are gaps around outside cover unit and the wall, fill with a caulk type sealer. The white foam is to prevent bugs from entering. Place this around the cover's hole and attach cover with screws.



SET THERMOSTAT TO DESIRED TEMPERATURE

PLUG CORD INTO GFI OUTLET AND YOU ARE DONE!

APPROXIMATE TEMPERATURE SETTINGS

Half way between MEDIUM and HIGH is approximately 70 degrees F. Setting it closer to MEDIUM will mean unit will come on at a cooler temperature. Since the BREEZER uses so little energy, many customers will leave it run continuously during the warm summer months.

WARRANTY - If you should experience any problems with your HEAT-N-BREEZE, please contact the Hound Heater Company directly. Please go to: www.houndheater.com and use the email contact on the site or use houndheater@gmail.com