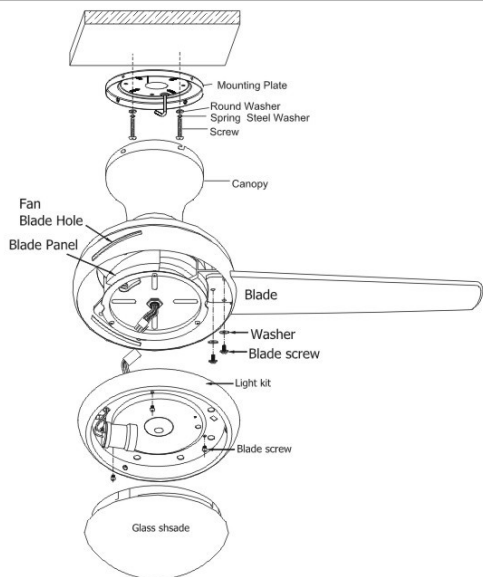
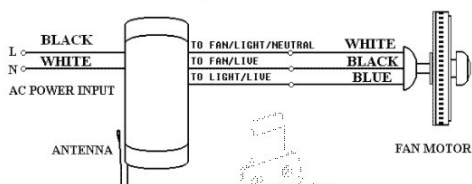


Parts names and their relative positions



ML-03-03

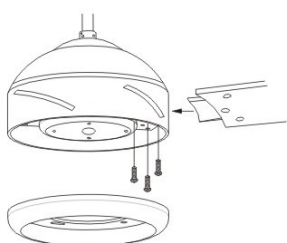
Ceiling Fan Remote Control Wiring Connection



Installation of Transmitter
Wall Mount Holder with two screws.

IMPORTANT : THIS APPLIANCE MUST BE GROUNDED.

4. Attach the assembled blades



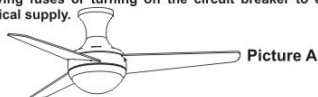
Carefully unwrap the blade and put the blade into the hole of sideband. Align the blade with the holes on the blade carrier which is pre-assembly onto the motor. Use the screws and fibred washers provided to connect them.

The rubber round washer and metal round washer should go on top the blade between the head of the screw and the surface of the blade. Ensure the screws are tightened up firmly. Repeat this process for all blades.

3

Installing the fan

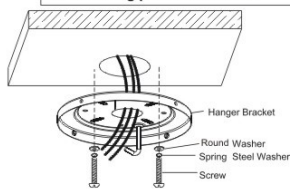
All electrical work should only be undertaken after disconnection of the power by removing fuses or turning off the circuit breaker to ensure all pole isolation of the electrical supply.



The following steps will guide you to a successful installation:

1. Mounting plate installation
2. Fan assembly
3. Remote control and Wiring instruction
4. Attaching the blades
5. Installing light bulb and glass

1. Mounting plate installation



The mounting plate should be screwed on to a firm flat surface. The fixing location must be able to withstand ten times the static weight of the fan. If you have any doubts as to the ability of your intended fixing location to be able to withstand this loading. Please contact our service help-line or another competent authority to advise you. In most situations two wood screws screwed into a wooden joist is more than adequate to support your ceiling fan. The mounting plate should be screwed onto the joist with the two wood screws provided. The washers provided should go in the following sequence:

Screw head > spring washer > round washer > Mounting plate > Ceiling. Screw the mounting plate to the ceiling and make sure all connections are secure to prevent the fan from falling. Fixings must screw into a joist and not just the plasterboard.

2. Fan assembly



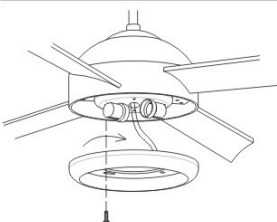
Lift the fan up to the mounting plate and put the fan onto the hook with one of the screw holes on canopy.

3. Remote control and Wiring instructions

WIRING INSTRUCTIONS : Before wiring the fan ensure that all power supplies are turned off at the breaker.

1

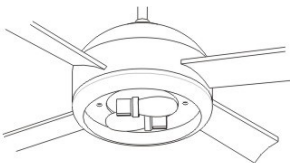
5. install light kit, bulb shade



Completely remove one of the three provided screws on the small round plate under the motor, and loosen partially the other two screws (remain a half part in the round plate).

To fasten the Light Fitting onto the small round plate, align the two keyhole slots on the light fitting to the partially loosened screws and turn the light fitting in place so that the fitting is held temporarily.

Replace the completely removed screw to the small round plate, then tightly fasten the 4 screws to hold the light fitting securely.



Install two (40 Watt Max) light bulbs. (not provided)

You must not touch new bulb with bare fingers when you take the bulb from box. The body oil residue may cause the bulb to explode. Use tissue or cloth to protect the new bulb from your fingers.

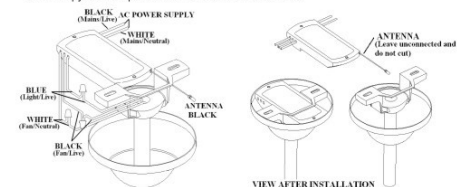
Before install the bulb, make sure the power is disconnected. All electrical work should commence only after all power is shut down either by turning off the circuit breaker or removing the fuse.

4

INSTALLATION INSTRUCTIONS

CAUTION: INCORRECT WIRE CONNECTION WOULD DAMAGE THIS RECEIVER

1. Ceiling fan must be set at HIGH speed and light kit (if any) at ON position by pulling the "Pull Switch" after installation.
2. Once the connection has been made, the receiver inserts into the drop rod hanging bracket. The canopy comes up to cover the receiver and bracket.



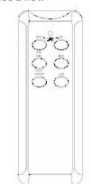
LEARNING PROCESS

1. After installing the unit and power on, open battery cover (with battery, DC1.5V/AAA*2pcs, installed), use a ball pen to press and hold the "LEARN" key 1-3seconds. LIGHT will blink 3 times then turn off and FAN turn on at high speed, which indicate that learning process finished. Please note that must press the "LEARNING KEY" within 30 seconds after power on. If just replace batteries, no need to re-learn.
2. Please note that the transmitter can learn in multiple receiver, when doing learning process please make sure not learn in other receiver.

NOTE: The transmitter and receiver had completed learning setting when in ex-factory. You don't need to execute the LEARNING PROCESS until replace a new transmitter or interfered from other remote units.

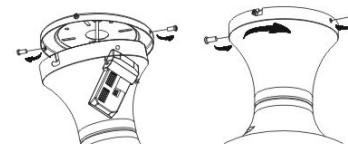
FUNCTIONS OF TRANSMITTER

- HI : Turn on the fan at high speed
- MED : Turn on the fan at medium speed
- LOW : Turn on the fan at low speed
- OFF : Turn off the ceiling fan.
- FAN 3Hrs : Setting up that the ceiling fan will off power after 3 hours automatically.
- LIGHT ON/OFF : Press and release immediately to turn on or off the light

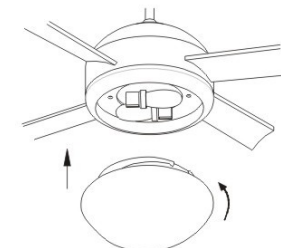


2

Now is a good time to test that the fan operates correctly. Turn on the power and use the transmitter to Control your fan, checking the fan speeds and light kit are worked properly. Please see page 10 for remote control function details.



After finishing the following step for installing light bulb and make sure light is working properly, please lift the canopy and carefully up to mounting plate, carefully put all wires into the canopy and don't bent or broken the wire. Use the canopy set screw to screw it firmly.



Put the shade into the light fitter and twist it tight. Ensure the shade is tightening firmly, the shade will drop off and broken not installed properly.

Now, your fan installation is complete.

5