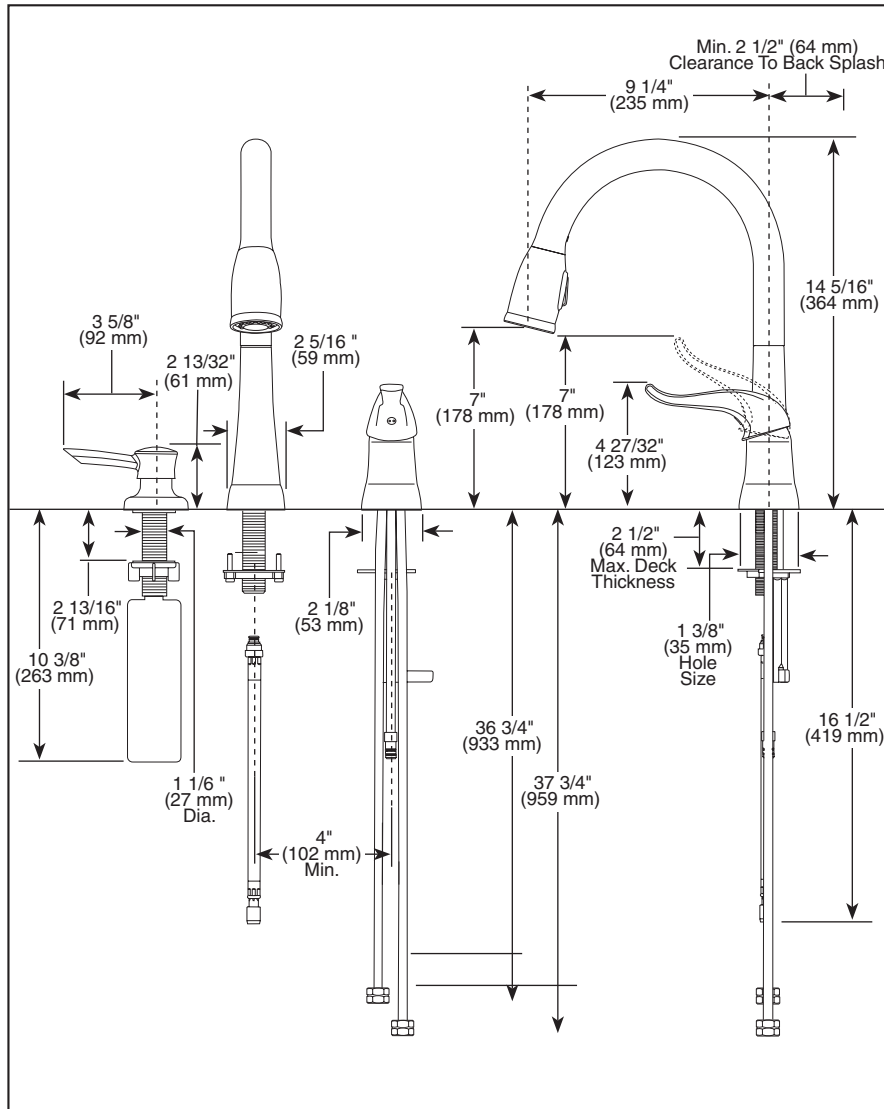


16970-SD-DST 

Submitted Model No.: _____

Specific Features: _____



KITCHEN FAUCETS

- Single Handle Widespread
- 3 Hole Sink Applications
- Soap Dispenser
- DIAMOND Seal® Technology
- Integrated Supply Tubes
- 2-Function Pull-Down
- MagnaTite® Docking System

STANDARD SPECIFICATIONS:


- Single handle, 2-function pull-down kitchen faucets for exposed mounting on three hole sinks.
- 14 5/16" (364 mm) high, 9 1/4" (235 mm) long, spout swings 360°.
- Control shall return to neutral position when faucet is turned off.
- Red/blue graphics on handle button to indicate hot/cold temperature.
- Certified double check valves in sprayer assembly for backflow prevention.
- Disposable hose lead to aid installation.
- Recommended hole size 1 3/8" (35mm) on 4" (102mm) centers.
- 3/8" O.D. straight, staggered pex supply tubes - 36 3/4" (934 mm) and 37 3/4" (959 mm) long.
- Touch-Clean® 2 function (stream spray) sprayhead.
- Magnetic docking system secures sprayer to spout.

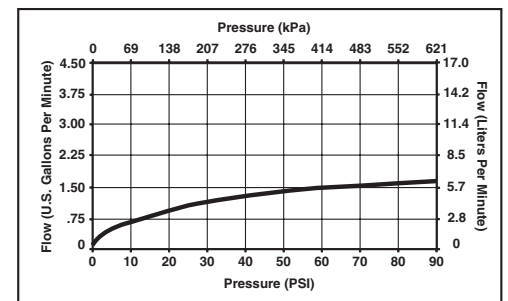
WARRANTY

- Lifetime Faucet and Finish Limited Warranty to the original consumer purchaser to be free from defects in material and workmanship.
- 5 Year Limited Warranty for usage in all industrial, commercial and business applications.



COMPLIES WITH:

- ASME A112.18.1 / CSA B1 25.1
- ASME A112.18.6
-  Indicates compliance to ICC/ANSI A117.1
- Verified compliant with .25% weighted average Pb content regulations.



Delta reserves the right (1) to make changes in specifications and materials, and (2) to change or discontinue models, both without notice or obligation. Dimensions are for reference only. See current full-line price book or www.specselect.com for finish options and product availability.

DSP-K-16970-SD-DST Rev. B



55 E. 111th Street, Indianapolis, Indiana 46280
 350 South Edgeware Road, St. Thomas, ON N5P 4L1
 © 2011 Masco Corporation of Indiana