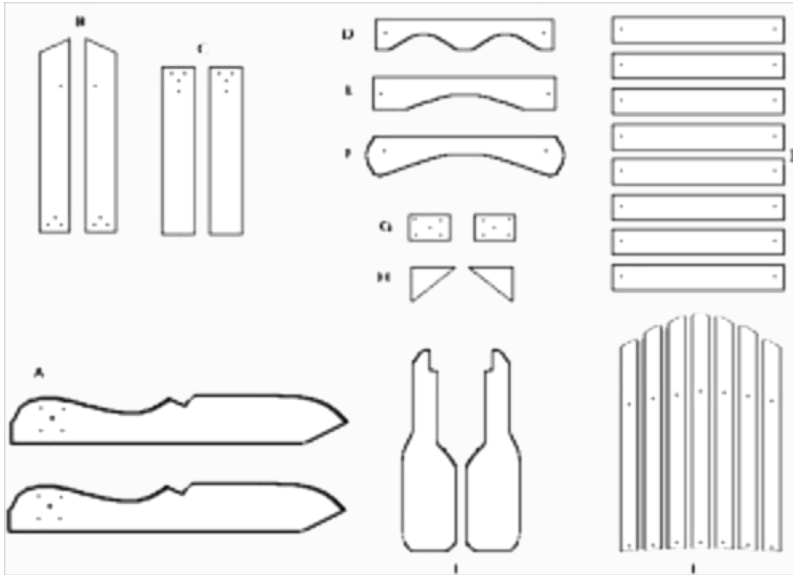


## Kit Options:

Many of our products come in 2 kit options:

- Unassembled Kit - All parts are packaged in an unassembled kit.
- Knock-Down - Major components are packaged 70% - 90% assembled.

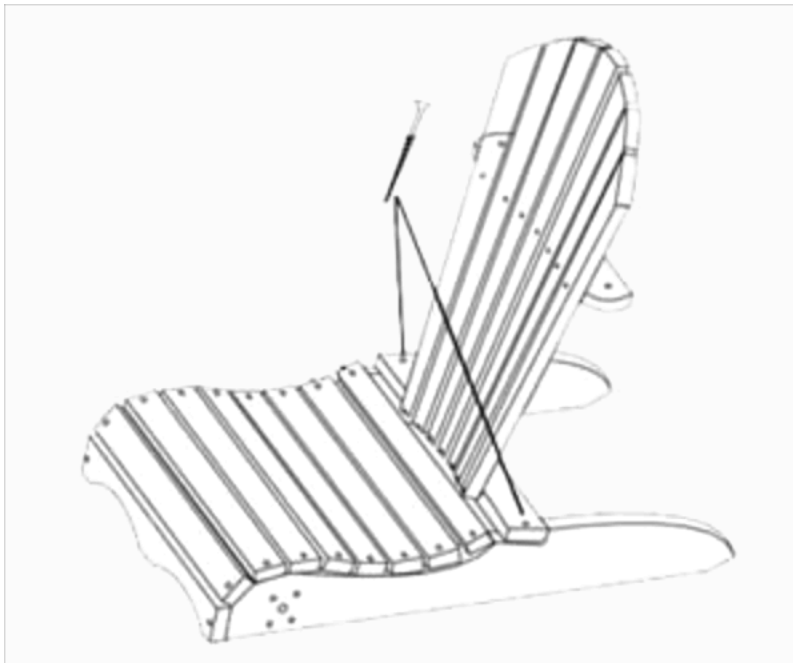


### Unassembled Kit

Customers who choose to assemble our products on their own will realize a decent savings, and at the same time experience the satisfaction of having a key hand in completion of their own furniture. Our unassembled kits include all necessary hardware and the same high quality materials and craftsmanship as the

pre-assembled (knock-down) version.

All components have been pre-cut, drilled and sanded. Easy to follow - fully illustrated instruction sheets are included, and in most cases customers will find average assembly time of 15 minutes to 1 hour.



### Assembled Kit

This option will satisfy customers who can't afford the time and need to have their new furniture ready for use ASAP. Most of our knock-down, depending on individual item, comes 70% - 90% completed, with remaining structures pre-drilled and pre-fitted to provide the customer with minimal set-up effort.

**The furniture made at All Things Cedar comes from *Clear Grained* WESTERN RED CEDAR giving it a distinct advantage over the elements of nature, whether finished or left unfinished**

**Both Packages Feature:**

- Solid Western Red Cedar construction
- Handcrafted pre-fit components
- Pre-drilled holes
- Fully Sanded Finish
- Smooth Routed Edges
- Rust Resistant Zinc Plated Hardware

**What you get when you order from us:**

- Detailed Craftsmanship
- Simple Illustrated Instructions
- All the necessary hardware ...included!
- Our no hassle return policy...
- Satisfying products that are built to last