

1 . 888 . 880 . 4884

Assembly Instructions

Item Number: EWB458-1 / 459-1

Product Name: Mirrored Lattice Front Jewelry Armoire



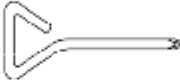





Pre-assembly Preparation:

Thank you for purchasing a Hayneedle product. Before you begin assembly:

- Verify that all of the required parts have been included in the carton. The contents included in a box of your new product are listed below.
- Clear an area of assembly as you unpack the carton. The parts should be placed on a carpeted or padded area to protect your product and the floor from damage.
- Read the Assembly Instruction in full before you begin to assemble.
- Please use CAUTION AND CARE WHEN LIFTING the product to avoid personal injury and/or damage to the product.
- **TWO-person assembly is recommended.**
- The hardware packet contains SMALL ITEMS which should be KEPT AWAY FROM CHILDREN.
- Need assistance assembling our product need parts

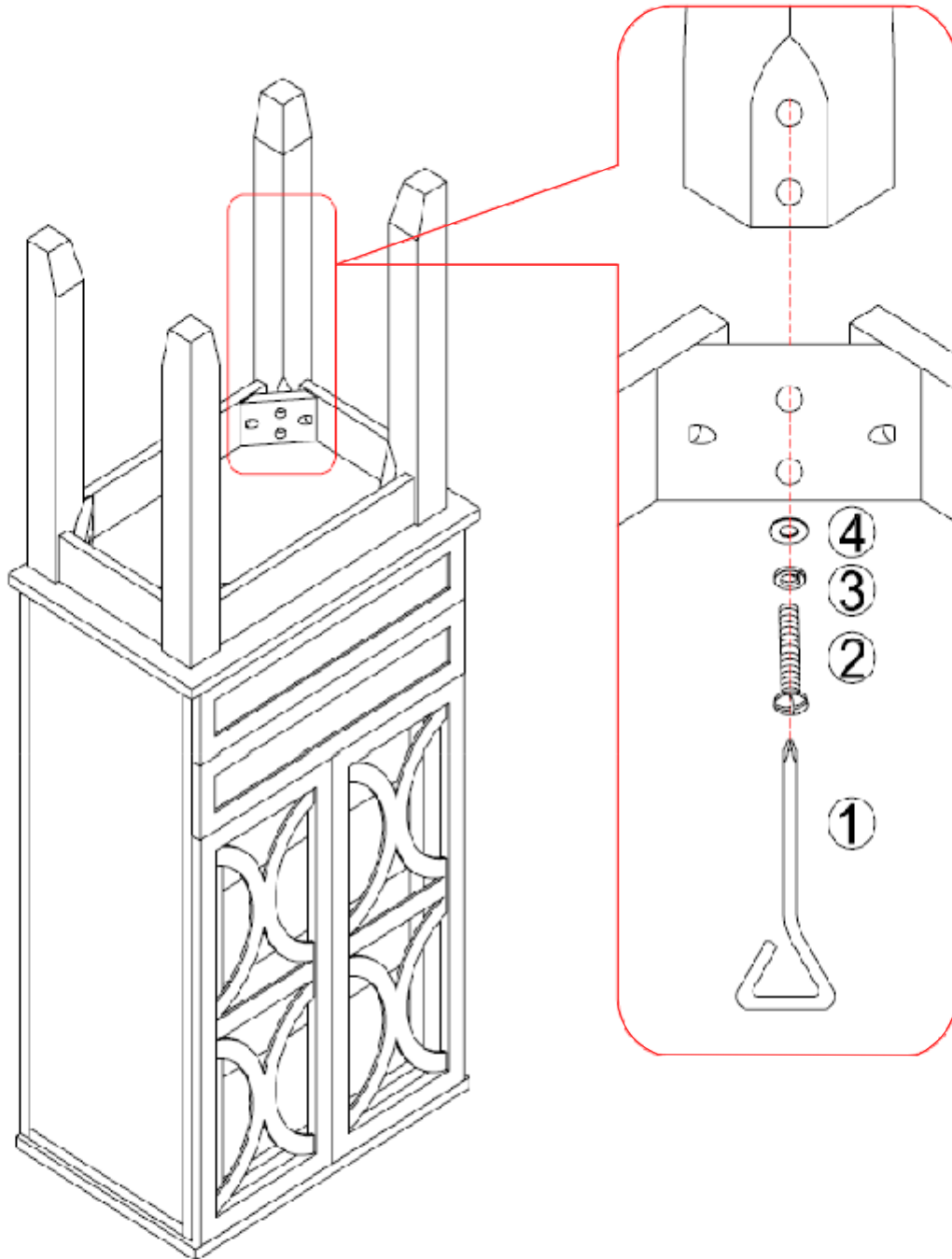
Call our Customer Service Department at 1-800-632-4901

Panel and Fittings Identification:

A	2 PCS		B	2 PCS	
					
1	1PC	2	8PCS	3	8PCS
					
4	8PCS	5	1PC	6	1PC
					

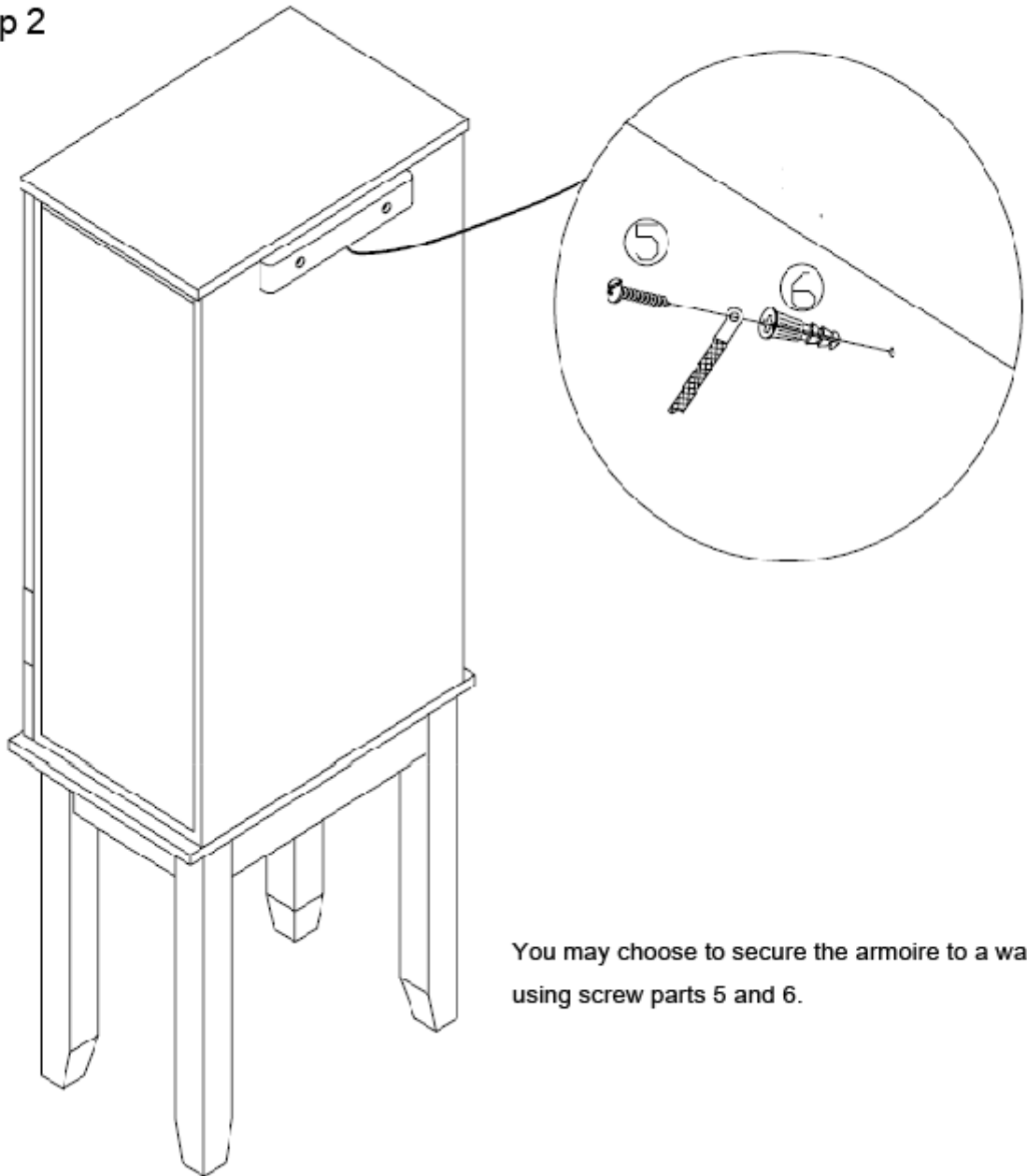
Step By Step Assembly Instructions:

Step 1



Attach the legs (Part A x 2, and Part B x 2) to the body of the armoire using the screw stool (Part 1) and four of each of the following hardware: large washer (Part 4), small washer (Part 3), and Screw (Part 2).

Step 2



You may choose to secure the armoire to a wall using screw parts 5 and 6.

FINISH

